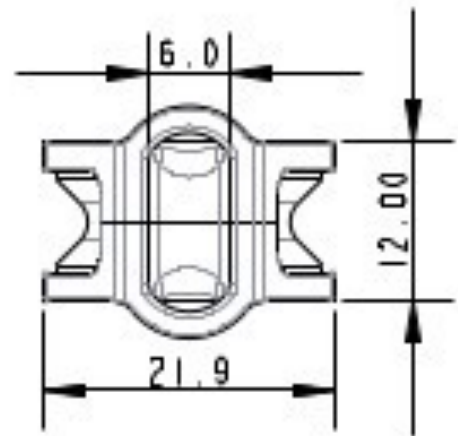
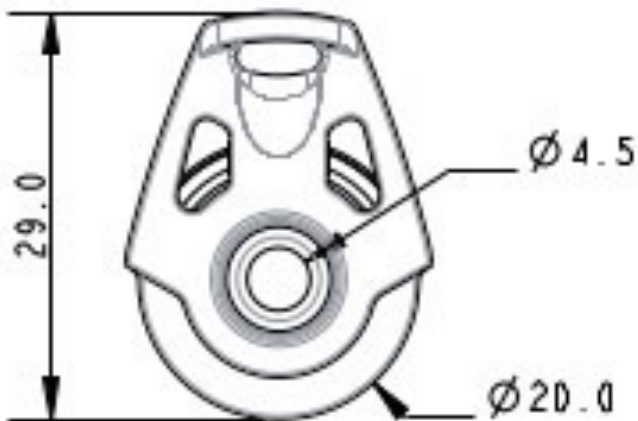


# A2020XHL allen

- **Product Description:** 20mm Extreme High Load Block
- **Length:** 29mm
- **Maximum Line Diameter:** 6mm
- **Breaking Load:** 900Kg
- **Maximum Working Load:** 300Kg
- **Weight:** 17g
- **Sheave Size:** 20mm



**Details:** The A2020XHL has been designed to deal with extremely high loads without compromising on low load dynamic performance. By combining our patented dynamic bearing technology with CNC machined aluminium side cheeks and a precision turned stainless steel sheave, we have created a block that can take a static load of 900Kg. Perfect for use in vang cascades or halyard turning points where loads can be extremely high.