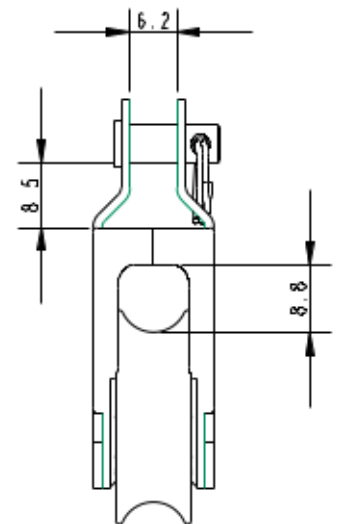
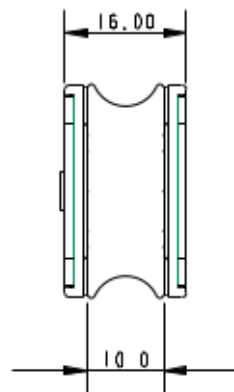
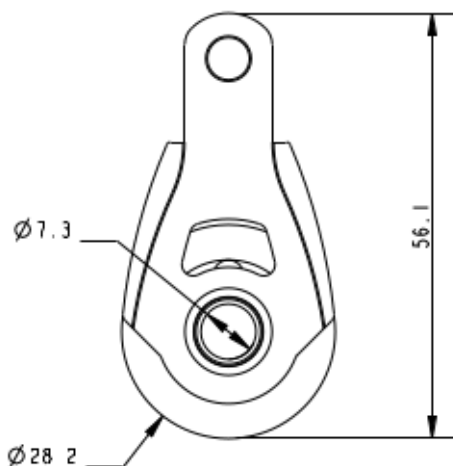


A2030F



- **Product Description:** Dynamic Single Fork Head
- **Sheave Diameter:** 30mm
- **Max Line Diameter:** 8mm
- **Shackle Pin:** 5mm
- **Breaking Load:** 450g
- **Maximum Working Load:** 140Kg
- **Weight:** 31g
- **Length:** 56mm



Details: The A2030F features a fork head with removable clevis pin making it a customisable block to multiple applications. This 30mm Dynamic Blocks use the same high quality Dynamic bearing, materials and precision engineering as our 20mm Dynamic Block range. The block also features a central rivet that provides great options as a tie on becket.