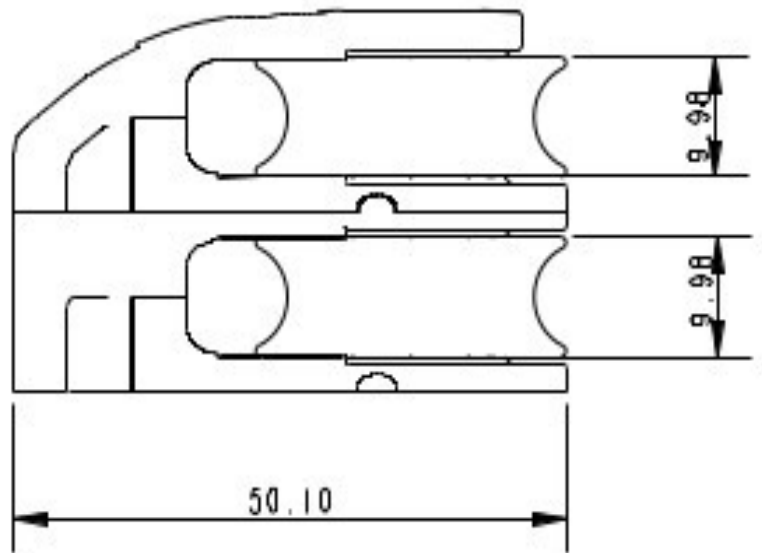
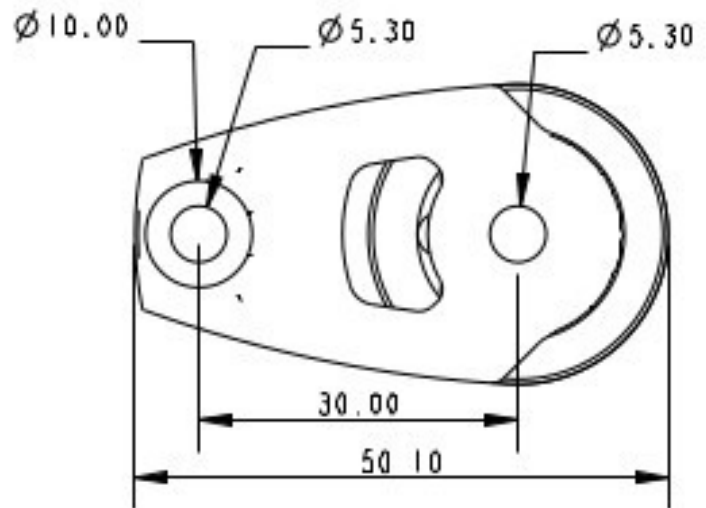


A2136M



- **Product Description:** 30mm Double Composite Cheek Block
- **Length:** 50mm
- **Maximum Line Diameter:** 8mm
- **Breaking Load:** 400Kg
- **Maximum Working Load:** 140Kg
- **Weight:** 36g
- **Fixing Hole Centres:** 30mm
- **Sheave Size:** 30mm



Details: The A2136M features the same dynamic bearing technology you will find in the rest of the 30mm dynamic block range; two rows of 316 stainless steel ball bearings located around a central axle. The A2136M also has two fixing holes and an inter-locking middle cheek face to ensure that there is no movement once fixed to the deck and put under load.