



Tri-color lights 1 NM (Starboard, Portside, Stern) for vessels - Under 20 Meters (+ Option: Windex/Anchor/Strobe/IR)

Tri-color lights

Horizontally mounted with 0,75m cable

Specifications	
Number	Tri-color lights
Light Color	Red,Green,White
Dimensions metric	Ø92,5mm x 36mm
Certification	This Navigation Light is certified by DNV, the Declaration of conformity and the certificates can be found on www.lopolight.com/underSupport
Dimensions imperial	Ø3.6" x 1.4"
Approved to	COLREG72,EN14744,IEC 60945,IACS E10,USCG,ABS,M.E.D.,DNV,LR
Visibility	1nm
Included In Package	1 Navigation light,precabled with 0.75 meter shielded marine grade cable,Installation guide
Operating temperature	-25°C to 55°C
Mounting	Horizontal
Materials	Silver anodized aluminum 25µ, PMMA lens, A4 stainless steel screws, Epoxy, Polyurethane
Operating Voltage	10-32VDC
EAN	5704438042636
IP rating	IP68
Power draw (W)	2.6
UPC Code	879343042769
Connection	0.7m cable
Current consumption (mA @ 12VDC)	150

Specifications	
Current consumption (mA @ 24VDC)	81
Vessel size	Under 12M
Min. feed wire gauge	0.5mm2 AWG22
Weight (Kg)	0.45 Kg
Weight (Oz)	15.92 Oz



1nm Tricolor, black, w/FB base

101-005-FB-B

Horizontally mounted with 0,7m cable
FB (flat base) POM mounting system

Specifications	
Number	101-005-FB-B
Light Color	Red,Green,White
Dimensions metric	Ø92,5mm x 36mm
Certification	This Navigation Light is certified by DNV, the Declaration of conformity and the certificates can be found on www.lopolight.com/underSupport
Dimensions imperial	Ø3.6" x 1.4"
Approved to	COLREG72,EN14744,IEC 60945,IACS E10,USCG,ABS,M.E.D.,DNV,LR
Visibility	1nm
Included In Package	1 Navigation light,precabled with 0.75 meter shielded marine grade cable,Installation guide
Operating temperature	-25°C to 55°C
Mounting	Horizontal
Materials	Silver anodized aluminum 25µ, PMMA lens, A4 stainless steel screws, Epoxy, Polyurethane
Operating Voltage	10-32VDC
EAN	5704438042643
IP rating	IP68
Power draw (W)	2.6
UPC Code	879343042776
Connection	0.7m cable
Current consumption (mA @ 12VDC)	150

Specifications	
Current consumption (mA @ 24VDC)	81
Vessel size	Under 12M
Min. feed wire gauge	0.5mm2 AWG22
Weight (Kg)	0.45 Kg
Weight (Oz)	15.92 Oz



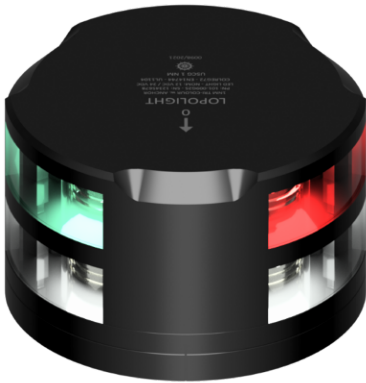
Tri-color w. windex mnt+light, black w/FB base

101-005W-FB-B

Horizontally mounted with 0,7m cable
FB (flat base) POM mounting system

Specifications	
Number	101-005W-FB-B
Light Color	Red,Green,White
Dimensions metric	Ø92,5mm x 36mm
Certification	This Navigation Light is certified by DNV, the Declaration of conformity and the certificates can be found on www.lopolight.com/underSupport
Dimensions imperial	Ø3.6" x 1.4"
Approved to	COLREG72,EN14744,IEC 60945,IACS E10,USCG,ABS,M.E.D.,DNV,LR
Visibility	1nm
Included In Package	1 Navigation light,precabled with 0.75 meter shielded marine grade cable,Installation guide
Operating temperature	-25°C to 55°C
Mounting	Horizontal
Materials	Silver anodized aluminum 25µ, PMMA lens, A4 stainless steel screws, Epoxy, Polyurethane
Operating Voltage	10-32VDC
EAN	5704438042667
IP rating	IP68
Power draw (W)	2.6
UPC Code	879343042790
Connection	0.7m cable
Current consumption (mA @ 12VDC)	150

Specifications	
Current consumption (mA @ 24VDC)	81
Vessel size	Under 12M
Min. feed wire gauge	0.5mm2 AWG22
Weight (Kg)	0.48 Kg
Weight (Oz)	16.82 Oz



1nm Tri-color/anchor, black w/FB base

101-009-FB-B

For sailing boats up to 12 meter
Horizontally mounted with 0,7m cable
FB (flat base) POM mounting system

Specifications	
Number	101-009-FB-B
Light Color	Red,Green,White
Dimensions metric	Ø92,5mm x 36mm
Certification	This Navigation Light is certified by DNV, the Declaration of conformity and the certificates can be found on www.lopolight.com/underSupport
Dimensions imperial	Ø3.6" x 1.4"
Approved to	COLREG72,EN14744,IEC 60945,IACS E10,USCG,ABS,M.E.D.,DNV,LR
Visibility	1nm
Included In Package	1 Navigation light,precabled with 0.75 meter shielded marine grade cable,Installation guide
Operating temperature	-25°C to 55°C
Mounting	Horizontal
Materials	Silver anodized aluminum 25µ, PMMA lens, A4 stainless steel screws, Epoxy, Polyurethane
Operating Voltage	10-32VDC
EAN	5704438042698
IP rating	IP68
Power draw (W)	2.6
UPC Code	879343042820
Connection	0.7m cable
Current consumption (mA @ 12VDC)	150

Specifications	
Current consumption (mA @ 24VDC)	81
Vessel size	Under 12M
Min. feed wire gauge	0.5mm2 AWG22
Weight (Kg)	0.73 Kg
Weight (Oz)	25.66 Oz



Tri-anchor, windex mnt+light black w/FB base

101-009W-FB-B

Horizontally mounted with 0,7m cable
FB (flat base) POM mounting system

Specifications	
Number	101-009W-FB-B
Light Color	Red,Green,White
Dimensions metric	Ø92,5mm x 36mm
Certification	This Navigation Light is certified by DNV, the Declaration of conformity and the certificates can be found on www.lopolight.com/underSupport
Dimensions imperial	Ø3.6" x 1.4"
Approved to	COLREG72,EN14744,IEC 60945,IACS E10,USCG,ABS,M.E.D.,DNV,LR
Visibility	1nm
Included In Package	1 Navigation light,precabled with 0.75 meter shielded marine grade cable,Installation guide
Operating temperature	-25°C to 55°C
Mounting	Horizontal
Materials	Silver anodized aluminum 25µ, PMMA lens, A4 stainless steel screws, Epoxy, Polyurethane
Operating Voltage	10-32VDC
EAN	5704438042728
IP rating	IP68
Power draw (W)	2.6
UPC Code	879343042851
Connection	0.7m cable
Current consumption (mA @ 12VDC)	150

Specifications	
Current consumption (mA @ 24VDC)	81
Vessel size	Under 12M
Min. feed wire gauge	0.5mm2 AWG22
Weight (Kg)	0.76 Kg
Weight (Oz)	26.70 Oz



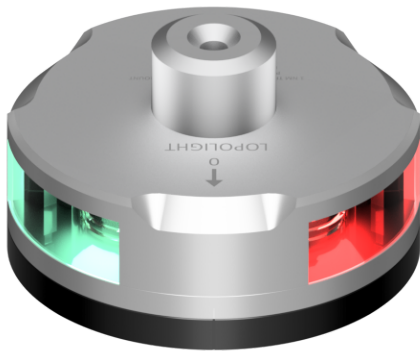
1nm Tricolor, silver, w/FB base

101-005-FB

Horizontally mounted with 0,7m cable
FB (flat base) POM mounting system

Specifications	
Number	101-005-FB
Light Color	Red,Green,White
Dimensions metric	Ø92,5mm x 36mm
Certification	This Navigation Light is certified by DNV, the Declaration of conformity and the certificates can be found on www.lopolight.com/underSupport
Dimensions imperial	Ø3.6" x 1.4"
Approved to	COLREG72,EN14744,IEC 60945,IACS E10,USCG,ABS,M.E.D.,DNV,LR
Visibility	1nm
Included In Package	1 Navigation light,precabled with 0.75 meter shielded marine grade cable,Installation guide
Operating temperature	-25°C to 55°C
Mounting	Horizontal
Materials	Silver anodized aluminum 25µ, PMMA lens, A4 stainless steel screws, Epoxy, Polyurethane
Operating Voltage	10-32VDC
EAN	5704438042636
IP rating	IP68
Power draw (W)	2.6
UPC Code	879343042769
Connection	0.7m cable
Current consumption (mA @ 12VDC)	150

Specifications	
Current consumption (mA @ 24VDC)	81
Vessel size	Under 12M
Min. feed wire gauge	0.5mm2 AWG22
Weight (Kg)	0.45 Kg
Weight (Oz)	15.92 Oz



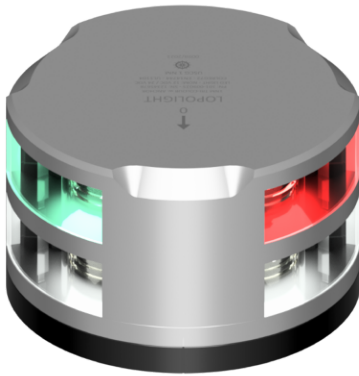
Tri-color w. windex mnt+light, silver w/FB base

101-005W-FB

Horizontally mounted with 0,7m cable
FB (flat base) POM mounting system

Specifications	
Number	101-005W-FB
Light Color	Red,Green,White
Dimensions metric	Ø92,5mm x 36mm
Certification	This Navigation Light is certified by DNV, the Declaration of conformity and the certificates can be found on www.lopolight.com/underSupport
Dimensions imperial	Ø3.6" x 1.4"
Approved to	COLREG72,EN14744,IEC 60945,IACS E10,USCG,ABS,M.E.D.,DNV,LR
Visibility	1nm
Included In Package	1 Navigation light,precabled with 0.75 meter shielded marine grade cable,Installation guide
Operating temperature	-25°C to 55°C
Mounting	Horizontal
Materials	Silver anodized aluminum 25µ, PMMA lens, A4 stainless steel screws, Epoxy, Polyurethane
Operating Voltage	10-32VDC
EAN	5704438042650
IP rating	IP68
Power draw (W)	2.6
UPC Code	879343042783
Connection	0.7m cable
Current consumption (mA @ 12VDC)	150

Specifications	
Current consumption (mA @ 24VDC)	81
Vessel size	Under 12M
Min. feed wire gauge	0.5mm2 AWG22
Weight (Kg)	0.48 Kg
Weight (Oz)	16.82 Oz



Tri-color/anchor, silver w/FB base

101-009-FB

Horizontally mounted with 0,7m cable
FB (flat base) POM mounting system

Specifications	
Number	101-009-FB
Light Color	Red,Green,White
Dimensions metric	Ø92,5mm x 36mm
Certification	This Navigation Light is certified by DNV, the Declaration of conformity and the certificates can be found on www.lopolight.com/underSupport
Dimensions imperial	Ø3.6" x 1.4"
Approved to	COLREG72,EN14744,IEC 60945,IACS E10,USCG,ABS,M.E.D.,DNV,LR
Visibility	1nm
Included In Package	1 Navigation light,precabled with 0.75 meter shielded marine grade cable,Installation guide
Operating temperature	-25°C to 55°C
Mounting	Horizontal
Materials	Silver anodized aluminum 25µ, PMMA lens, A4 stainless steel screws, Epoxy, Polyurethane
Operating Voltage	10-32VDC
EAN	5704438042674
IP rating	IP68
Power draw (W)	2.6
UPC Code	879343042806
Connection	0.7m cable
Current consumption (mA @ 12VDC)	150

Specifications	
Current consumption (mA @ 24VDC)	81
Vessel size	Under 12M
Min. feed wire gauge	0.5mm2 AWG22
Weight (Kg)	0.73 Kg
Weight (Oz)	25.66 Oz



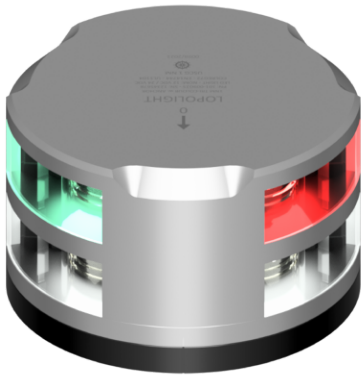
Tri-anchor, Windex mnt+light, Silver w/FB base

101-009W-FB

Horizontally mounted with 0,7m cable
FB (flat base) POM mounting system

Specifications	
Number	101-009W-FB
Light Color	Red,Green,White
Dimensions metric	Ø92,5mm x 36mm
Certification	This Navigation Light is certified by DNV, the Declaration of conformity and the certificates can be found on www.lopolight.com/underSupport
Dimensions imperial	Ø3.6" x 1.4"
Approved to	COLREG72,EN14744,IEC 60945,IACS E10,USCG,ABS,M.E.D.,DNV,LR
Visibility	1nm
Included In Package	1 Navigation light,precabled with 0.75 meter shielded marine grade cable,Installation guide
Operating temperature	-25°C to 55°C
Mounting	Horizontal
Materials	Silver anodized aluminum 25µ, PMMA lens, A4 stainless steel screws, Epoxy, Polyurethane
Operating Voltage	10-32VDC
EAN	5704438042704
IP rating	IP68
Power draw (W)	2.6
UPC Code	879343042837
Connection	0.7m cable
Current consumption (mA @ 12VDC)	150

Specifications	
Current consumption (mA @ 24VDC)	81
Vessel size	Under 12M
Min. feed wire gauge	0.5mm2 AWG22
Weight (Kg)	0.76 Kg
Weight (Oz)	26.70 Oz



Tri-color/anchor, silver w/FB base

101-009-FB 22M

Horizontally mounted with 22m cable
FB (flat base) POM mounting system

Specifications	
Number	101-009-FB 22M
Light Color	Red,Green,White
Dimensions metric	Ø92,5mm x 36mm
Certification	This Navigation Light is certified by DNV, the Declaration of conformity and the certificates can be found on www.lopolight.com/underSupport
Dimensions imperial	Ø3.6" x 1.4"
Approved to	COLREG72,EN14744,IEC 60945,IACS E10,USCG,ABS,M.E.D.,DNV,LR
Visibility	1nm
Included In Package	1 Navigation light,precabled with 0.75 meter shielded marine grade cable,Installation guide
Operating temperature	-25°C to 55°C
Mounting	Horizontal
Materials	Silver anodized aluminum 25µ, PMMA lens, A4 stainless steel screws, Epoxy, Polyurethane
Operating Voltage	10-32VDC
EAN	5704438042681
IP rating	IP68
Power draw (W)	2.6
UPC Code	879343042813
Connection	0.7m cable
Current consumption (mA @ 12VDC)	150

Specifications	
Current consumption (mA @ 24VDC)	81
Vessel size	Under 12M
Min. feed wire gauge	0.5mm2 AWG22
Weight (Kg)	1.94 Kg
Weight (Oz)	68.44 Oz



Tri-anchor, windex mnt+light w/FB base

101-009W-FB 22M

Horizontally mounted with 22m cable
FB (flat base) POM mounting system

Specifications	
Number	101-009W-FB 22M
Light Color	Red,Green,White
Dimensions metric	Ø92,5mm x 36mm
Certification	This Navigation Light is certified by DNV, the Declaration of conformity and the certificates can be found on www.lopolight.com/underSupport
Dimensions imperial	Ø3.6" x 1.4"
Approved to	COLREG72,EN14744,IEC 60945,IACS E10,USCG,ABS,M.E.D.,DNV,LR
Visibility	1nm
Included In Package	1 Navigation light,precabled with 0.75 meter shielded marine grade cable,Installation guide
Operating temperature	-25°C to 55°C
Mounting	Horizontal
Materials	Silver anodized aluminum 25µ, PMMA lens, A4 stainless steel screws, Epoxy, Polyurethane
Operating Voltage	10-32VDC
EAN	5704438042711
IP rating	IP68
Power draw (W)	2.6
UPC Code	879343042844
Connection	0.7m cable
Current consumption (mA @ 12VDC)	150

Specifications	
Current consumption (mA @ 24VDC)	81
Vessel size	Under 12M
Min. feed wire gauge	0.5mm2 AWG22
Weight (Kg)	1.97 Kg
Weight (Oz)	69.38 Oz