


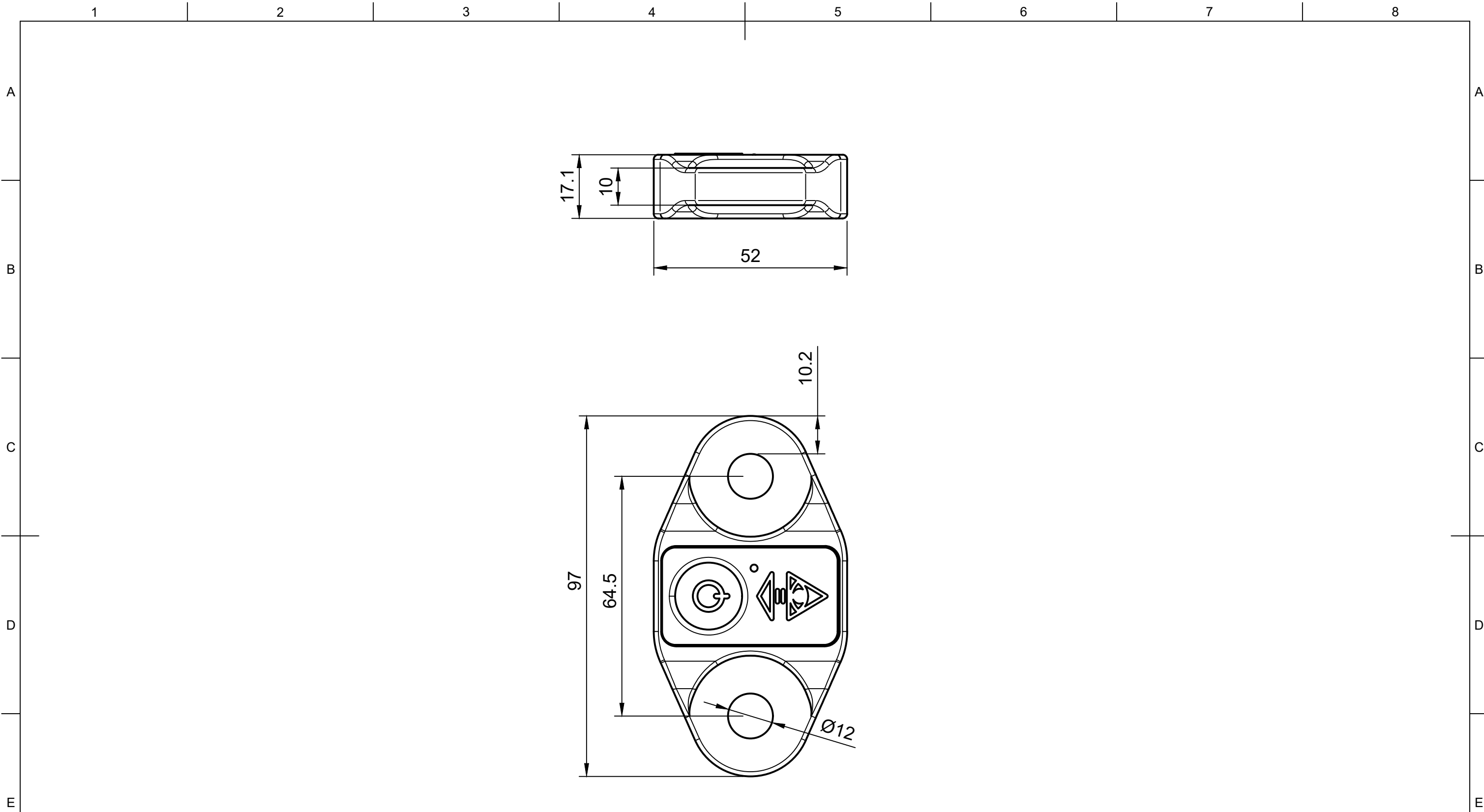
Part Number	SE01	SE02	SE03	SE05
Working Load Limit (kgf/lbs)	2000 / 4400	5000 / 11000	10000 / 22000	20000 / 44000
Factor of Safety	4x	4x	4x	4x
Weight	160g	390g	710g	770g
Battery type	Lipo	Lipo	Lipo	Lipo
Battery Life	2400 hours	2400 hours	2400 hours	2400 hours





Cyclops Marine
Unit 25 The Slipway
Port Solent
Portsmouth
PO6 4TR

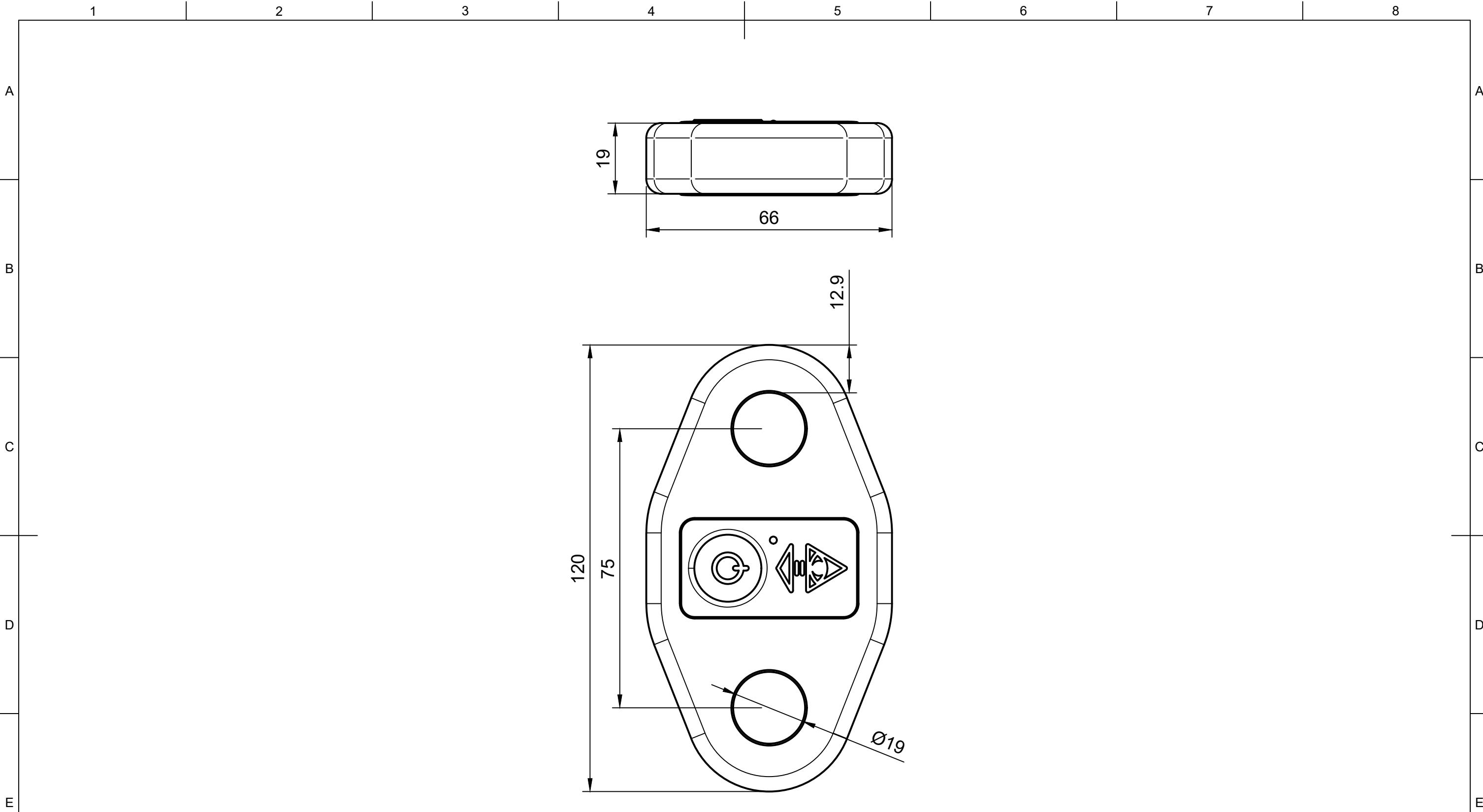
Project			smartlink EE		Drawn	Caleb Barnes	Date	30/01/2025
Title			Envelope Drawing		Rev.	B	Approved	Date
Part			SE01, SE02, SE03, SE05		Material Ti-6Al-4V			
Finish					Dimensions: mm, degrees Tolerance unless stated: 0.1mm, 0.1°			
1ST ANGLE			Scale	1:1.5	Format	A3	Sheet	1/5

© Cyclops Marine Limited. All rights reserved. Reproduction, use and dissemination of this drawing may only be undertaken with the prior consent of Cyclops Marine Limited. Do not scale.





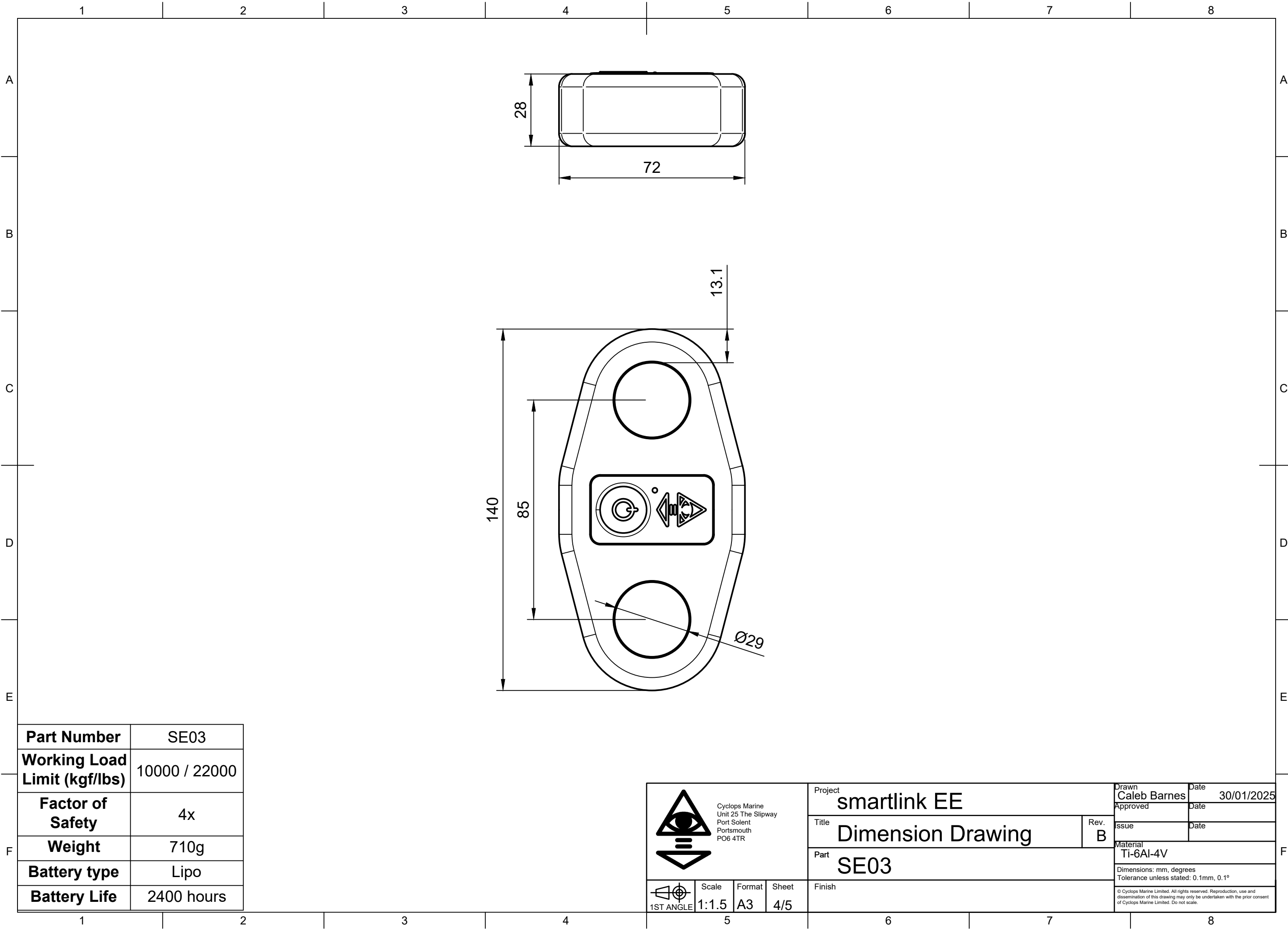
Part Number	SE01
Working Load Limit (kgf/lbs)	2000 / 4400
Factor of Safety	4x
Weight	160g
Battery type	Lipo
Battery Life	2400 hours

<div><div>Cyclops Marine Unit 25 The Slipway Port Solent Portsmouth PO6 4TR</div></div>				Project smartlink EE		Drawn Caleb Barnes	Date 30/01/2025
				Title Dimesion Drawing		Approved	Date
				Part SE01		Rev. B	Issue Date
<div><div>1ST ANGLE</div></div> <div>Scale 1:1</div> <div>Format A3</div> <div>Sheet 2/5</div>				Material Ti-6Al-4V			
				Dimensions: mm, degrees Tolerance unless stated: 0.1mm, 0.1°			
				© Cyclops Marine Limited. All rights reserved. Reproduction, use and dissemination of this drawing may only be undertaken with the prior consent of Cyclops Marine Limited. Do not scale.			





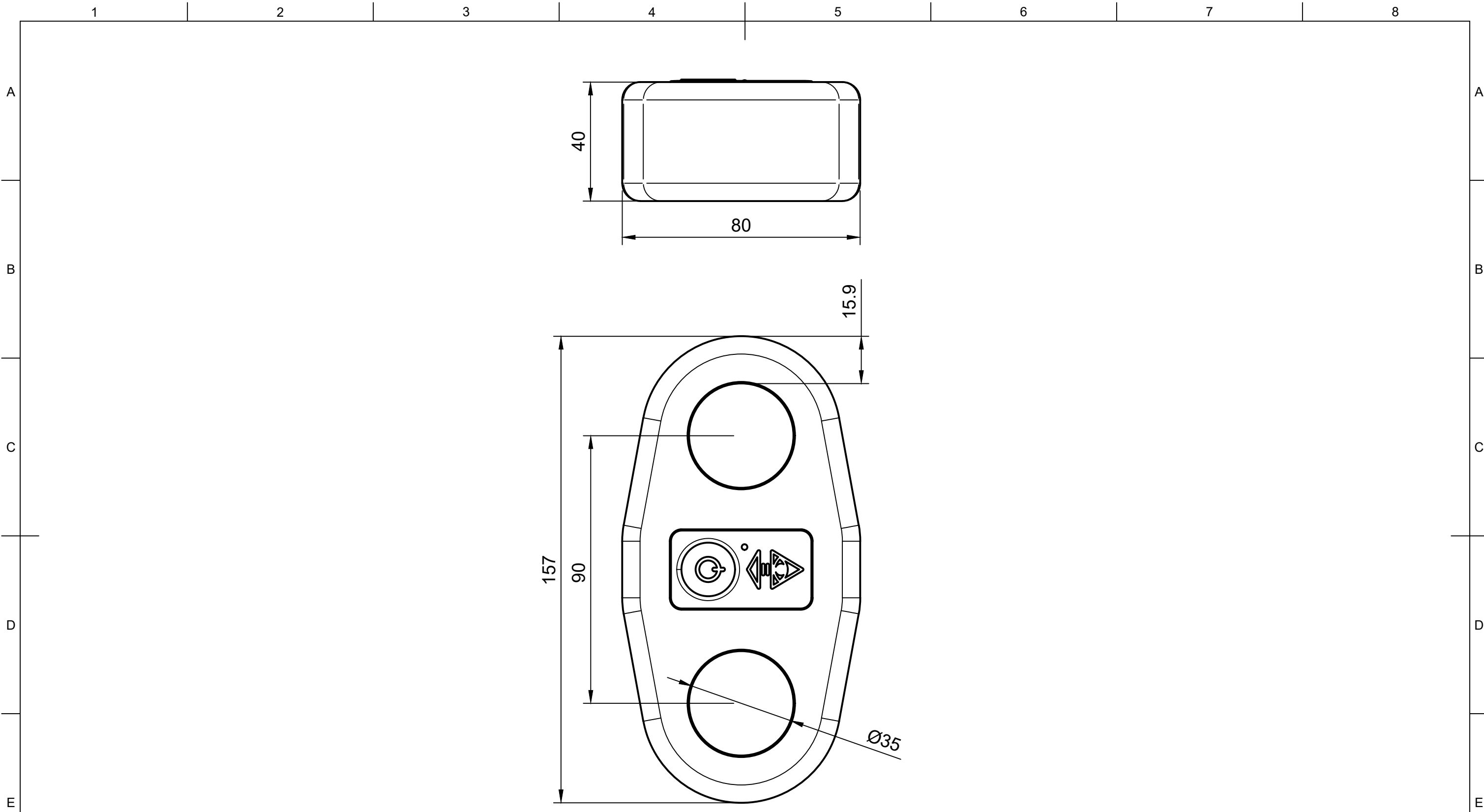
Part Number	SE02
Working Load Limit (kgf/lbs)	5000 / 11000
Factor of Safety	4x
Weight	390g
Battery type	Lipo
Battery Life	2400 hours

<div></div> <div>Cyclops Marine Unit 25 The Slipway Port Solent Portsmouth PO6 4TR</div>				Project smartlink EE		Drawn Caleb Barnes	Date 30/01/2025
				Title Dimension Drawing		Approved	Date
				Part SE02		Rev. B	Issue Date
<div></div> <div>1ST ANGLE</div>				Material Ti-6Al-4V			
				Dimensions: mm, degrees Tolerance unless stated: 0.1mm, 0.1°			
				© Cyclops Marine Limited. All rights reserved. Reproduction, use and dissemination of this drawing may only be undertaken with the prior consent of Cyclops Marine Limited. Do not scale.			
Scale 1:1	Format A3	Sheet 3/5	Finish				





Part Number	SE03
Working Load Limit (kgf/lbs)	10000 / 22000
Factor of Safety	4x
Weight	710g
Battery type	Lipo
Battery Life	2400 hours

 <div>Cyclops Marine Unit 25 The Slipway Port Solent Portsmouth PO6 4TR</div>	Project smartlink EE			Drawn Caleb Barnes	Date 30/01/2025
	Title Dimension Drawing			Approved	Date
	Part SE03			Issue B	Date
	Finish			Material Ti-6Al-4V	
				Dimensions: mm, degrees Tolerance unless stated: 0.1mm, 0.1°	
 1ST ANGLE	Scale 1:1.5	Format A3	Sheet 4/5	© Cyclops Marine Limited. All rights reserved. Reproduction, use and dissemination of this drawing may only be undertaken with the prior consent of Cyclops Marine Limited. Do not scale.	



Part Number	SE05
Working Load Limit (kgf/lbs)	20000 / 44000
Factor of Safety	4x
Weight	770g
Battery type	Lipo
Battery Life	2400 hours

<div></div> <div>Cyclops Marine Unit 25 The Slipway Port Solent Portsmouth PO6 4TR</div>				Project smartlink EE		Drawn Caleb Barnes	Date 30/01/2025
				Title Dimension Drawing		Approved	Date
				Part SE05		Rev. B	Issue
<div></div> <div>1ST ANGLE</div>				Finish		Material Ti-6Al-4V	
						Dimensions: mm, degrees Tolerance unless stated: 0.1mm, 0.1°	
						© Cyclops Marine Limited. All rights reserved. Reproduction, use and dissemination of this drawing may only be undertaken with the prior consent of Cyclops Marine Limited. Do not scale.	
Scale	Format	Sheet					
1:1.25	A3	5/5					