

INSTRUCTIONS

MORF BLOCK is a modular block. Prior to the block assembly make please check:

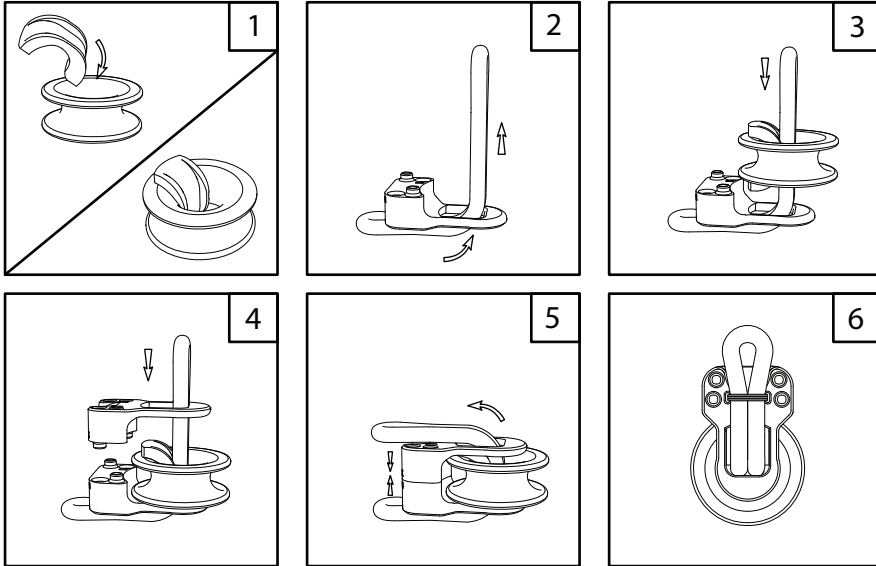


Bearing compatibility with chosen sheave.



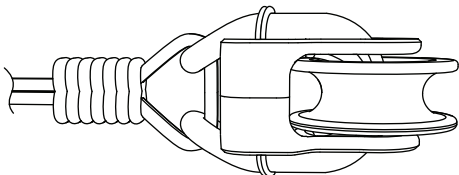
Loop dimension chart.

SINGLE SHEAVE ASSEMBLY



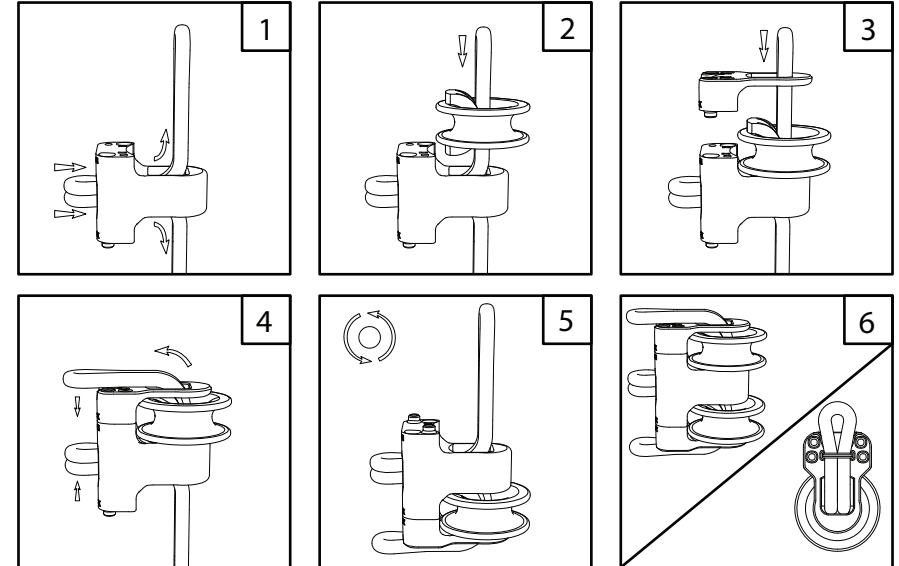
1. Insert the bearing into the matching sheave.
2. Place the loop through the cheek. The loop must be placed double (basket). Please check the loop table for dimensions.
3. Insert the sheave and bearing assembly (as described in 1) through the rope. Ensure the bearing is placed correctly into the cheek recess and the loop runs over the bearing. It is best not to place splices or stitches over the bearing.
4. Insert the cheek through the rope. Prior to closing the cheeks ensure that the bearing is allocated in the recess and the rope doesn't interfere.
5. Ensure that the cheeks are aligned prior to closing. Misalignment may cause damage. Press till both cheeks are in contact; if a small gap is left it will close when loading the block.
6. Lash the loop tight to keep the loop in place; bear in mind that when stretched the rope will reduce its diameter.

LASHING



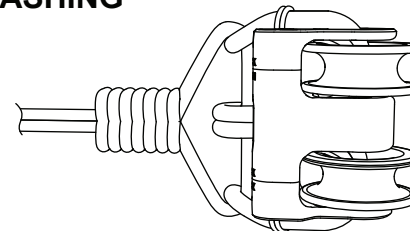
1. Select the lashing rope according to the load.
2. Ensure the loop ends are blocked tightly by the lashing rope.

MULTI SHEAVE ASSEMBLY



1. Insert both loops into the MB Multi. The loop must be placed double (basket). Please check the loop table for dimensions.
2. Insert the sheave and bearing assembly (as described in SINGLE SHEAVE ASSEMBLY 1) through the rope. Ensure the bearing is placed correctly into the cheek recess and the loop runs over the bearing. It is best not to place splices or stitches over the bearing.
3. Insert the cheek through the rope. Prior to closing the cheeks ensure that the bearing is allocated in the recess and the rope doesn't interfere.
4. Ensure that the cheeks are aligned prior to closing. Misalignment may cause damage. Press till both cheeks are in contact; if a small gap is left it will close when loading the block.
5. Rotate the block and repeat steps 2,3 and 4 to install the second sheave.
6. Lash the loop tight to keep the loop in place; bear in mind that when stretched the rope will reduce its diameter.

LASHING



1. Select the lashing rope according to the load.
2. Multi sheave blocks can be lashed independently or with a joint lashing.
3. Ensure the loop ends are blocked tightly by the lashing rope.

NOTE: MORF BLOCK cheeks are meant to stay together. If disassembly is required it must be done with care and at your own risk. Snap fittings must be kept aligned at all times to avoid damage.